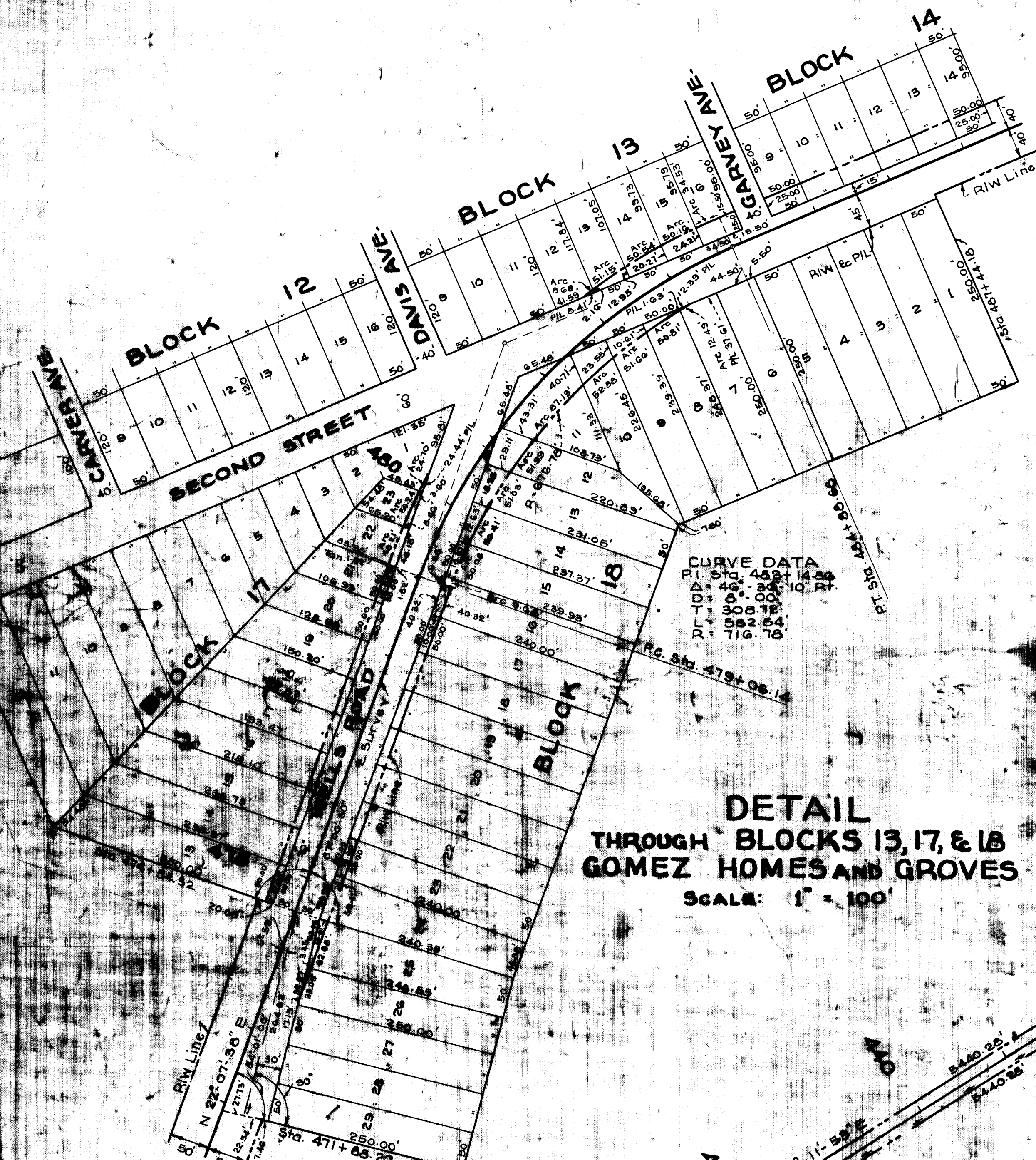


FED. ROAD DIST. No.	STATE	SEC. AND TWP. No.	RANGE	SHEET No.
3	FLA.	(8951-250)	50	2

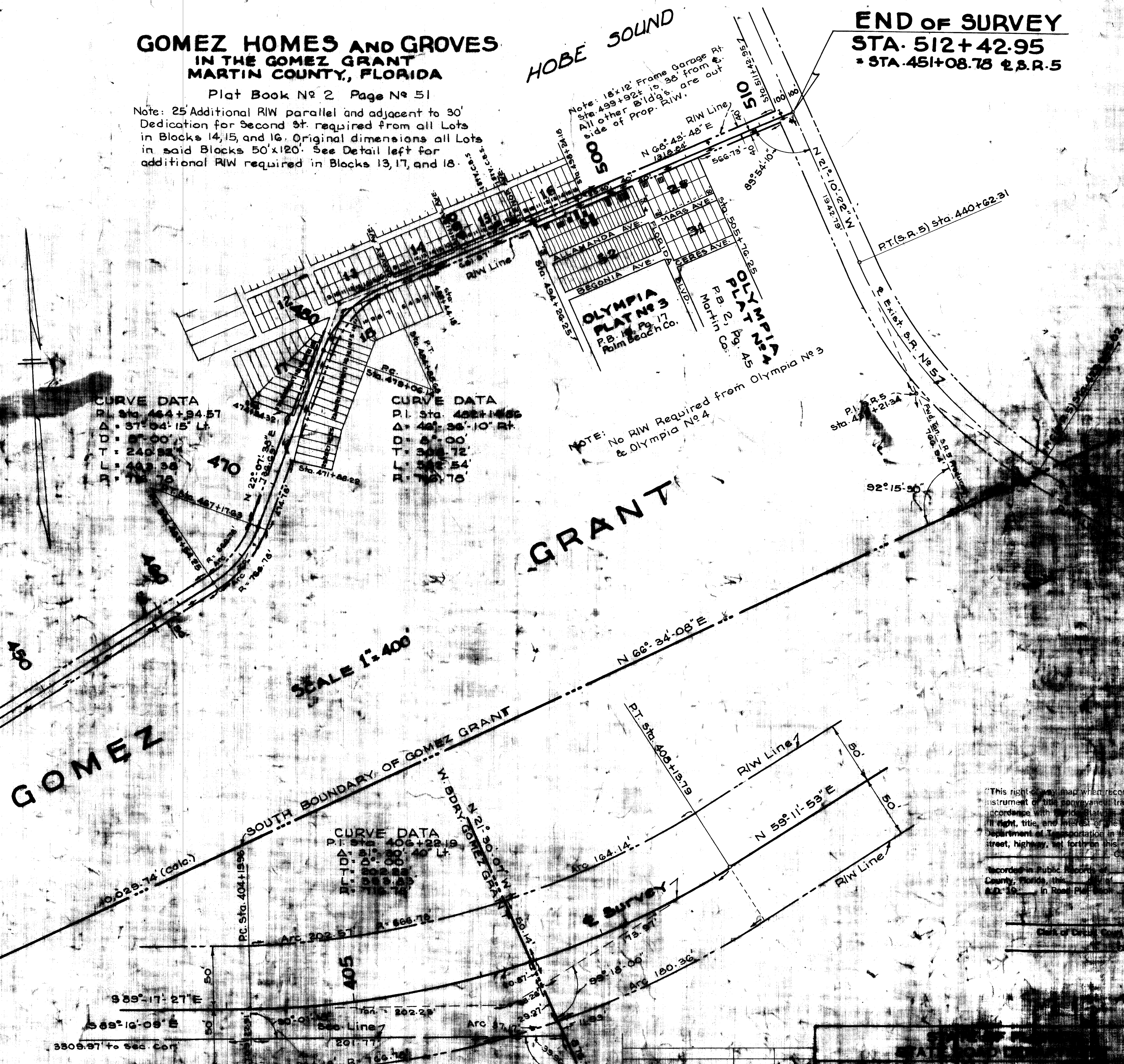
**GOMEZ HOMES AND GROVES
IN THE GOMEZ GRANT
MARTIN COUNTY, FLORIDA**

Plat Book No 2 Page No 51
 Note: 25' Additional R/W parallel and adjacent to 30' Dedication for Second St. required from all Lots in Blocks 14, 15, and 16. Original dimensions all Lots in said Blocks 50'x120'. See Detail left for additional R/W required in Blocks 13, 17, and 18.

**END OF SURVEY
STA. 512+42.95
= STA. 451+08.78 ± S.R. 5**



**DETAIL
THROUGH BLOCKS 13, 17, & 18
GOMEZ HOMES AND GROVES**
SCALE: 1" = 100'



**DETAIL
INTERSECTION WITH WEST BOUNDARY
OF GOMEZ GRANT**
SCALE: 1" = 50'

This right-of-way was made when records instrument of the improvement were recorded with the improvement. The right-of-way is shown in the street, highway, or public use map of Martin County, Florida, this right-of-way is shown in the public use map of Martin County, Florida, this right-of-way is shown in the public use map of Martin County, Florida.

SEC. 29
SEC. 32
SEE
DETAIL RT.

RICKEY
ROAD